



Making the Most of.....



uLearn is the resource that provides you with the very best quality Ordnance Survey mapping, along with detailed aerial photography for the South West Grid for Learning area.

uLearn also provides **historical** mapping for the whole South West and is provided free to Local Authority Schools in partnership with the South West Grid for Learning.

As well as online activity, uLearn enables you to view full-screen maps and print off all the hard-copies you need. The principal maps available are:

World Atlas

(Map of the whole world)

Landform World DEM

(Hills and valleys for the whole World)

TeleAtlas Europe

(Street-level mapping for the whole of Europe!)

Collins 1:250,000 UK

(‘Driving quality’ map)

Ordnance Survey 1:50 000

(The most commonly used OS map)

Ordnance Survey 1:10 000

(Very detailed OS map)

2m Aerial

(Aerial imagery for the whole of England and Wales)

25cm Aerial

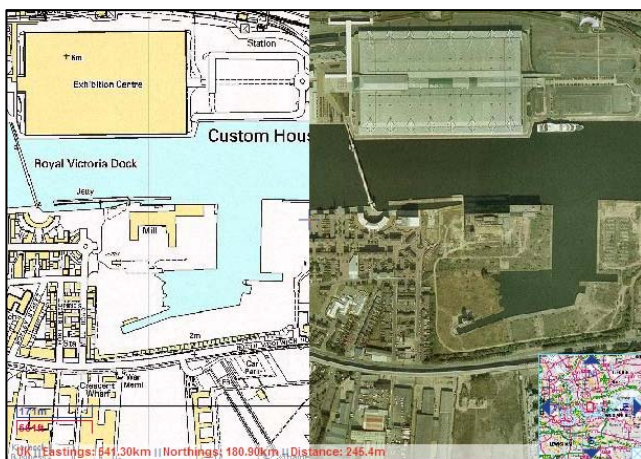
(Very high quality imagery for the whole SWGfL area)

Historic map

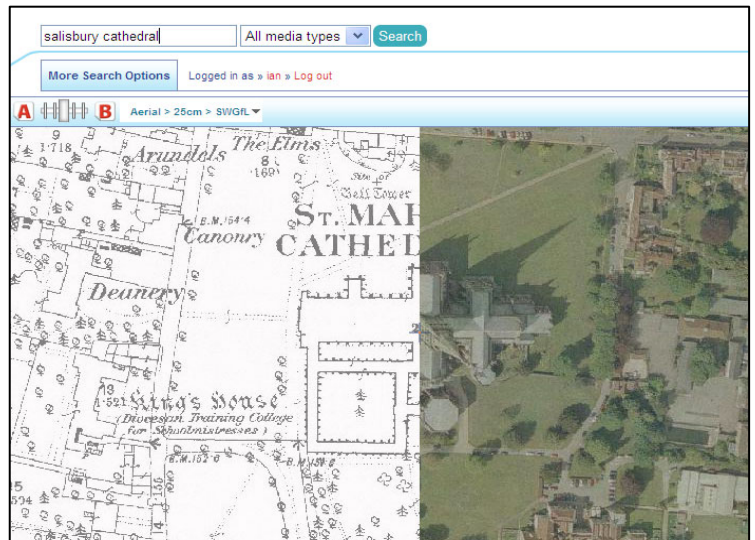
(Wonderful historic map of the whole SWGfL area 1881)



Ordnance Survey mapping © Crown copyright 2008
LA 100039244



Ordnance Survey mapping © Crown copyright 2008
LA 100039244 & © Copyright Getmapping 2008



© Copyright Getmapping 2008 © Crown Copyright and Landmark Information Group Ltd.
All rights reserved 2008



uLearn is freely available to all South West Grid for Learning Local Authority schools.

Just visit www.ulearn.infomapper.com and click on the ‘Register – 14 day free trial’ button. As a member of the South West Grid for Learning you will be automatically given a full licence.

For any information or support, call 01752 797 138.





Making the Most of.....



uLearn - supporting Learning and Teaching

uLearn – for Key Stage 3 Geography

The QCA's 'the importance of geography' states that pupils must 'learn to think spatially and use maps, visual images and new technologies, including **Geographical Information Systems (GIS)**, to obtain, present and analyse information.' uLearn supports Geography teachers to address these requirements in the Revised Geography curriculum.

The revised curriculum statement goes on to indicate that GIS should be used as one of the key sources of information in the Geographical enquiry process, that GIS is a key fieldwork tool, and is a principal source for geographical data.

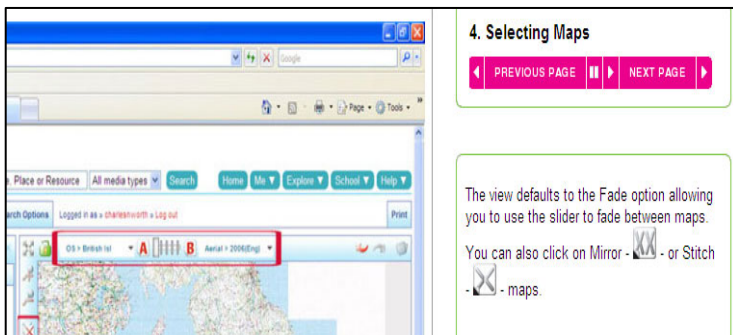
The document says that Geographical information Systems 'are valuable for mapping and visualising information, as well as linking and analysing different spatial datasets. Pupils should have opportunities to learn about GIS.'

uLearn has been specifically designed to make potentially complicated GIS functionality easy enough for even the youngest learner to use with ease, providing (as required by the curriculum) 'maps at a range of scales, photographs, satellite images and other geographical data'. uLearn enables the pupils to 'construct maps and plans at a variety of scales, using graphical techniques to present evidence.'

uLearn – for Key Stage 1 & 2 Geography

The Primary Geography curriculum frequently requires learners to research their locality and school environment. uLearn provides exactly the tools you need. Young learners are comfortable with the use of digital cameras (they even carry them around in their mobile phones). Collecting images and information about their locality and linking them to uLearn's maps couldn't be easier, and enables uLearn users to address Geography curriculum tasks such as:

- **Around our school** (Y1 Unit 1)
- **How can we make our local area safer?** (Y1 Unit 2)
- **'Investigating our local area'** (Y3 Unit 6),
- **Improving the environment** (Y4 Unit 8),
- **Should the high street be closed to traffic?** (Y5 Unit 12)
- **Investigating rivers** (Y6 Unit 16)
- **How and where do we spend our time?** (Y4 Unit 19)
- **Local traffic – an environmental issue** (Y5 Unit 20)
- **How can we improve the area we can see from our window?** (Y3/4 Unit 21)



teaching and learning

What Ofsted say:

A school OFSTED report referred to uLearn with the following words (reproduced with the permission of the head teacher):

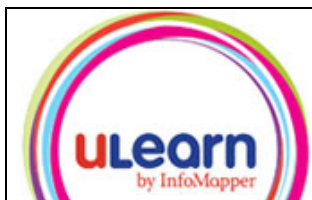
"Example of outstanding practice: Precise planning, clear objectives and good SEN support lead to very effective learning for all pupils"...

"The OS map projected onto a whiteboard immediately secures interest. It amplifies the teacher's explanation of how place names provide information about who first lived there - these are Saxons - and what pupils will look for, and learn in the lesson. Result - they know what they will learn, and how they will use maps to do it. Enthusiastic groups then pore over separate maps of different areas, acquiring information about Saxon, Viking, Celtic and Roman place names, to be shared with others in the final session. Constant reminders throughout the lesson about its purpose ensure that, when they finally come together, all pupils are clear about what they have learnt and explain it with evident pride. Learning is then ratcheted a notch higher!

A second map is projected of a different location. Pleasure, and evidence of learning, is abundantly obvious when pupils spontaneously declare that the area shown, carefully chosen by the teacher, has been settled by all four peoples. Use of ICT, enlarged maps and text for SEN pupils, and excellent use of questioning by both the teacher and teaching assistant, secure total engagement in learning from start to finish."

- ▶ uLearn
- ▶ Maps and More
- ▶ Free Resources
- ▶ Teaching and Learning
- KS3 Geography
- Safe, education environment
- Contribute to uLearn
- A real audience
- What pupils say
- What teachers say
- What Ofsted says
- ▶ Help and Support

For Learning and Teaching resources including Schemes of Work and tutorials, Visit www.ulearn.infomapper.com click on the 'Help' button and follow the 'User Guides'.



uLearn is freely available to all South West Grid for Learning Local Authority schools.
Just visit www.ulearn.infomapper.com and click on the 'Register – 14 day free trial' button. As a member of the South West Grid for Learning you will be automatically given a full licence.
For any information or support, call 01752 797 138.

