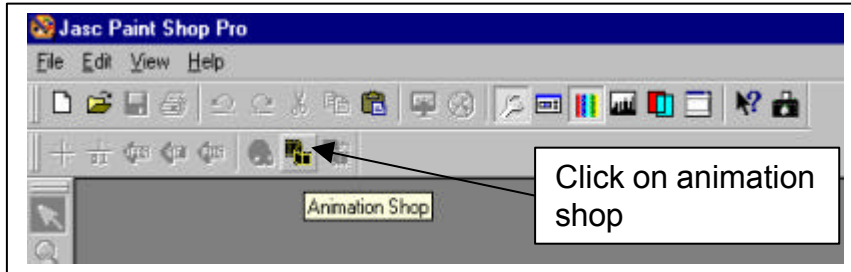


Animation Shop

Before you begin animating you need to plan which photographs will be used for which frames. Save all the images into one folder and produce a plan labelling the frames with the image number in order.



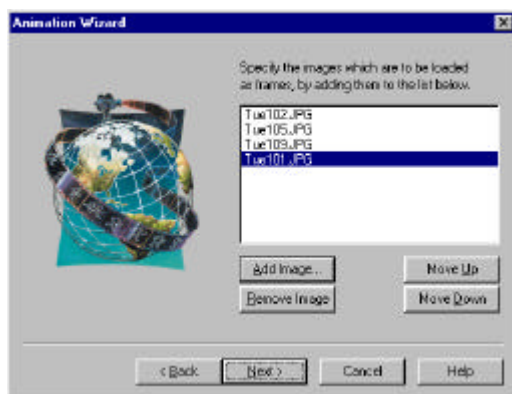
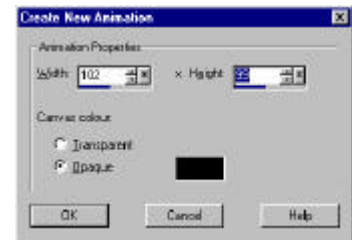
This is a part of the Paint Shop Pro package. Open the software and then click on the icon for Animation Shop shown here.



Click on Animation Wizard to begin your animation.

You are first asked to identify the size of frames for your animation. Use the up/down arrows to select a number or click on the larger down arrow and drag the blue part along the bar that appears.

Follow through the wizard. You get the opportunity to choose the number of times your animation should be played.



Click on *add image* and then browse to find the pictures you want to use. Put the pictures into the correct sequence by selecting each image and clicking on the *move up/down* buttons. Then click *next* and then *finish*.

To insert text click on *effects* and then *insert, text effect*. Text can be typed in and you can select the effect that you want to use.

Beware – to produce the text effects the program inserts extra frames automatically. Using lots of

effects will create a very large animation. It may be better to write your text on paper and include it in the original image. Using transitions between images also causes extra frames to be created.

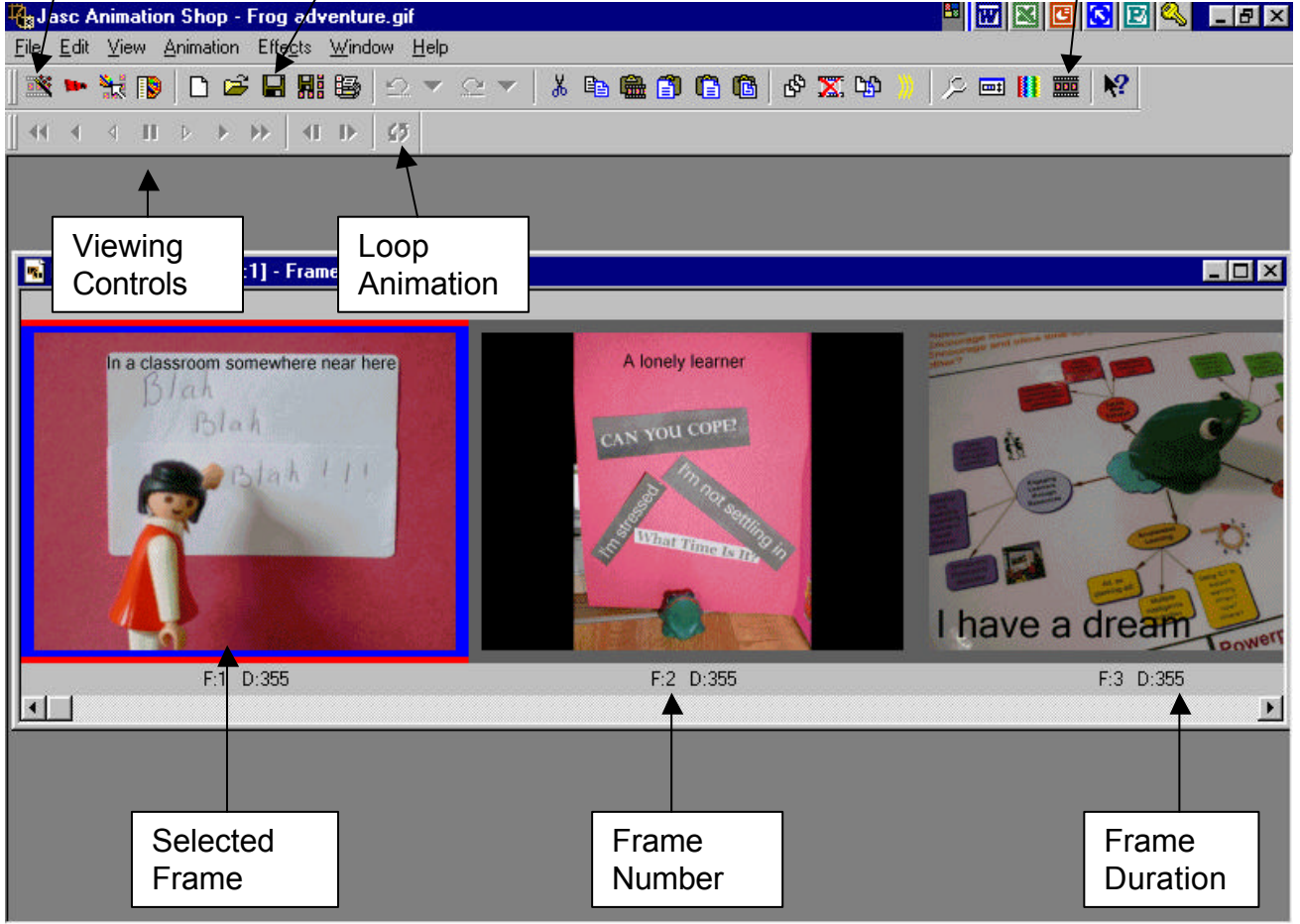
Use *edit, undo* to remove effects. The undo button can be used cumulatively.

To delete a frame click on it to select it and press delete on the keyboard.

Animation Wizard

Save Animation

View Animation



Viewing Controls

Loop Animation

F:1 D:355

F:2 D:355

F:3 D:355

Selected Frame

Frame Number

Frame Duration