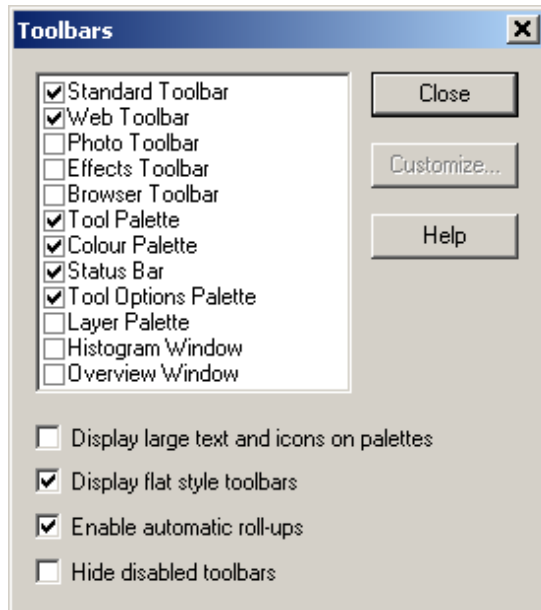


# Paint Shop Pro 7: Using Picture Tubes

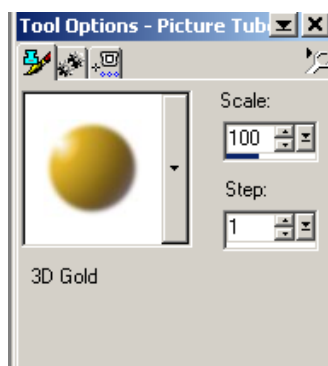
1. Open up an image you wish to add Picture Tubes to.
2. Make sure you have the Tools Palette and the Tools Options Palette activated by going to View / Toolbars



3. Activate the Picture Tube tool by clicking its button on the Tool Palette (the first time you click on this button it will upload all the Picture Tubes ready for you to use). The Tool Palette should be on the right-hand side of the screen.

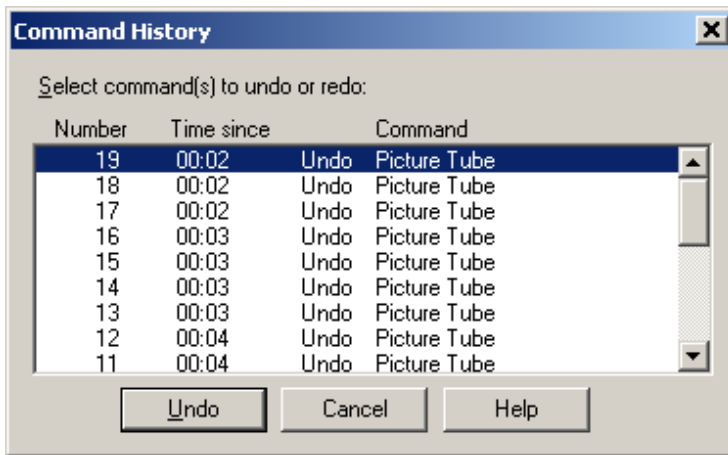


4. In the Tools Options Palette, select a Picture Tube from the Tube drop-down list. A sample of the tube appears in the preview box. Each Picture Tube contains a collection of related objects or an object in a variety of settings. For example, the Fish Picture Tube applies 12 different fish, while the Coloured Spheres Picture Tube applies a sphere in 15 colours.



Click on the Picture Tube you want and then click on the image to add it. You can add additional Picture Tubes by clicking on the image again and again, or several at once by clicking and holding down your mouse key and dragging your cursor across the image.

If you need to remove any of the Picture Tubes you have added then you can choose Edit / Undo Picture Tube. Or if you have added several and you wish to remove them go to Edit / Command History

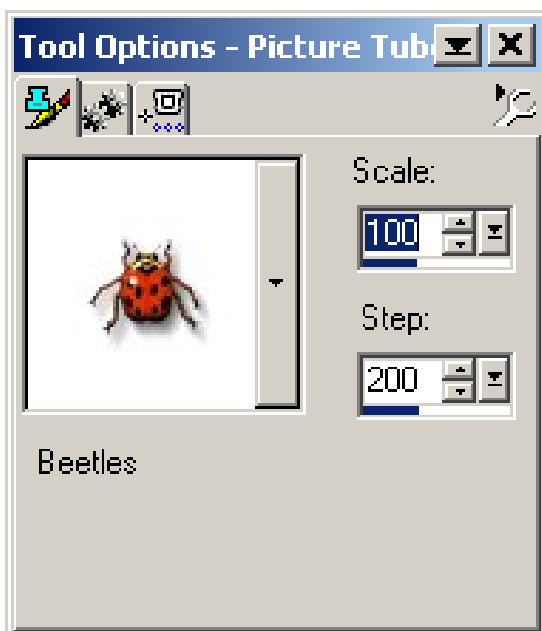


You can highlight all or some of the commands you wish to Undo. To highlight all click once on the top command, scroll down to the bottom command and whilst holding down the shift key click on the bottom one. To select different commands hold down the ctrl key before clicking on each one.

## Picture Tube Settings

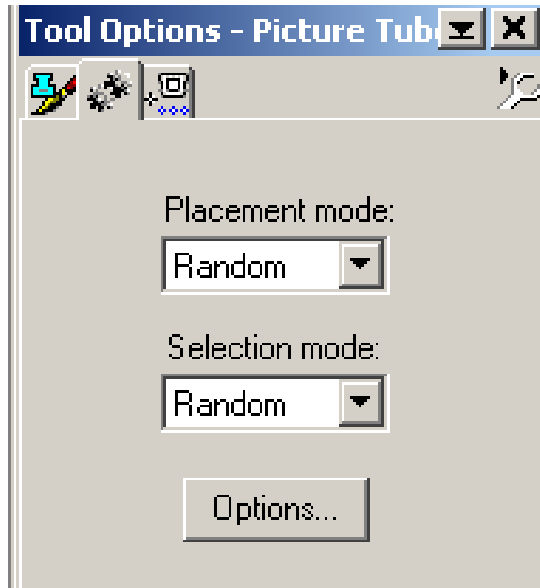
There are various settings with the Picture Tubes, which you can change using the Tools Options palette.

**On the first tab:**



Use the numeric edit control of the Scale box to set the Picture Tube size. You can reduce and enlarge it from 10% to 250% of its original size. You can also set the spacing of the tubes when you drag the cursor by adjusting the step box. The step is a percentage of the diameter of the brush tip. As the step decreases, the brush tip touches the surface more frequently. Its outline becomes less noticeable, and the strokes appear smoother and more dense.

## On the second tab:



In the Placement Mode drop-down box, choose Random or Continuous to control whether the Picture Tubes appear in the image at random or equal intervals. In the Selection Mode drop-down box, choose how Paint Shop Pro selects the cells (images) it paints.

You have a choice of 5 modes:

1. Random (selects images at random)
2. Incremental (selects the first image in the tube and repeats it only after it has selected all the images)
3. Angular (based on the direction you drag the cursor)
4. Pressure (need a pressure sensitive pad for this one)
5. Velocity (based on the speed you drag the cursor)

Here is an example of a photo that has had a picture tube added to it:

