

PLAYSCAPES DESIGN DAY

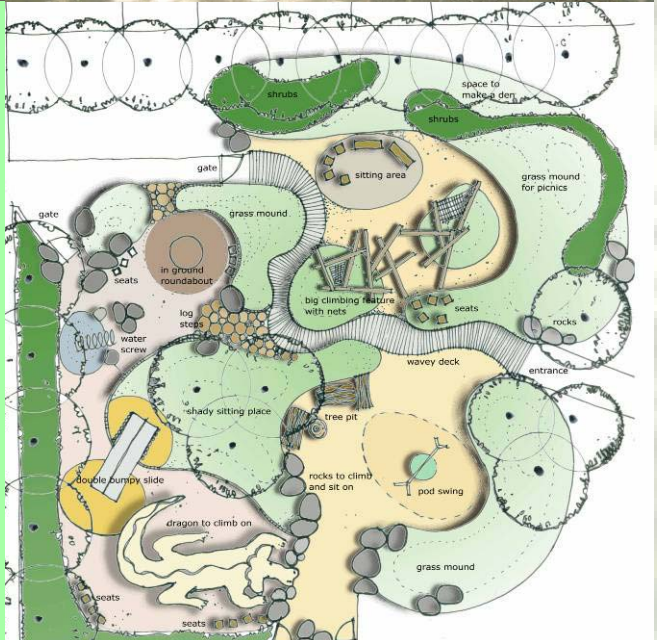


7 NATIONAL EXPERTS AND
INNOVATORS

7 PRESENTATIONS ON LEADING UK
DESIGNS

1 AFTERNOON OF PLAYFUL
LANDSCAPE DESIGN WORKSHOPS

June 13th
ARMSTRONG HALL
CHAPEL STREET
THORNBURY
BRISTOL BS35 2BJ



Free to all South Gloucestershire Delegates



INVESTOR IN PEOPLE



Who ?

The programme is meant for all those whose decisions affect the outdoor places where children play.

- Development Control, Planning, Property Developers
- Landscape Design, School Design, Children's Centre's Stakeholders
- Parks and Open Spaces, Grounds Improvement, Play Lottery Bids
- Child Development and Education, Children's Outdoor Learning, Training
- Decision Making, Committees Members, Governors, Parish and Town Councillors



Why ?

We need better solutions for the design of places for children to play in, current approaches are failing children.

- Play is the most effective form of sustained physical activity (British Medical Association and Centre for Disease Control)
- Nature and dirt is good for Children (Bristol University 2007)
- Good playscape design can increase outdoor play and activity fourfold (Baldo Blinkhert University of Frieberg 2005)



What ?

What if we started with ideas? What if we designed places that put the child first? What about vandals? What about cats? Where should childhood take place?

- A morning of ideas, examples and lessons learnt from those at the forefront of designing landscapes which promote playfulness.
- An afternoon of discussion and drawing up real master plans for children's centres, schools and parks and public spaces.
- A chance to access a national conference programme for South Gloucestershire and local delegates

THE SPEAKERS

Farrer Huxley
Associates



Noel Farrer Huxley Associates London

Noel worked as a local authority landscape architect before founding Farrer Huxley Associates in 1995. FHA specialises in urban housing, education, play and open space. Noel's passion is regeneration through consultation for the benefit of the whole community. Noel also lectures on design and is a visiting tutor for the Inchbald School. Noel's expertise is realising successful landscapes through in depth understanding of political and public sector working.



Robin Sutcliffe Sutcliffe Play Yorkshire

Robin Sutcliffe is Managing Director of Sutcliffe Play Ltd, world leading designers and manufacturers of inclusive playground equipment. A founder member and Vice President of the Federation of European Play Industries (FEPI), he also chairs F.E.P.I.'s safety committee - the European Play Safety Forum. F.E.P.I.'s aim is to bring together companies from the play sector right across Europe to improve the quality of children's play experience.



Adam White MLI, Principal Landscape Architect, Groundwork West London

Adam White is the Principal Landscape Architect with Groundwork West London; and has previously worked with Groundwork Lincolnshire and Groundwork South East London. He is also the Chair of the Groundwork UK Landscape Architects Forum, a Green Flag Judge, Ambassador for Sustainable Communities, L.I. Pathway to Chartership Mentor and pioneer of the Groundwork Playscape project. www.groundwork-playscape.org.uk.



Rinska Wassenaar Children's Playground Company Dublin

Rinska Wassenaar is a playground designer with particular interest in natural landscapes for play. She is a director of The Children's Playground Company, qualified as an art teacher, also a play inspector. Designs playgrounds all over Ireland and the UK, winner of the National Railway Museum Design Competition Jan '04.



Hattie Coppard Snug and Outdoors London

Hattie Coppard is Director of Snug & Outdoor, an award winning artist-led company who design innovative play environments for schools and community places. She has more than 20 years experience of devising and delivering, public art projects, play design and architecture schemes and creative consultation for local authorities, housing associations, schools and charities. Current Snug & Outdoor projects include: a major scheme to build the first all-inclusive play environment for the centre of Southampton; an interactive play park for the new Docklands area in Dublin.



Sue Gutteridge Stirling Play Services

Sue has worked for Stirling Council since 1984, and was Scotland's first Play Development Officer. She is currently Play Services Manager, with overall responsibility both for staffed play provision and the 100+ public play areas. The team at Stirling Council try to promote a 'play landscape' approach to public play areas, to link staffed play provision and the use and development of public play areas, and to acknowledge and encourage children and young people's desire to exercise their imaginations, and experience risk, adventure and mystery



Roger Worthington BA(Hons), Dip LA, MLI, MICFor Senior Landscape Architect, Forestry Commission, South England

Roger works for the Forestry Commission across the south half of England as a landscape advisor and planner, an area that includes the National Arboretum, Westonbirt and the National Pinetum, Bedgebury. The majority of his work is focussed on designing recreation facilities in existing FC forests and the creation of new community woodlands. Recently he has been involved in the development of a FC policy on nature play provision and has worked on the planning and design of a number of innovative play projects. He is also a member of a Europe wide COST Action, Forest Recreation and Nature Tourism (E33).

Programme

9.00	Registration	
9.25-9.30	Film Looking For Great Places to Play (Berlin 2006)	Schools and Parks in Berlin
9.30-9.40	Introduction	
9.40-10.10	Sue Gutteridge	Experiments in Play Space Design in Stirling
10.10-10.40	Hattie Coppard	Experimental Playgrounds Transforming bleak environments into playful and imaginative playscapes.
10.35-10.55	Rinska Wassenaar	Small Parks and Natural Play
10.55-11.20	Noel Farrah	Innovation in Open Space
11.20-11.40	Q and A	
11.40-12.10	Coffee	
12.10-12.30	Roger Worthington	Growing Adventure within Forest Sites
12.35-12.55	Adam White Ground Works	Playscapes
12.55-1.15	Robin Sutcliffe	Sutcliffe Plays Approach
1.20 -2.00	Lunch	
2.00-2.20	Panel Q and A	
2.20- 3.50	Master Planning Workshops facilitated by designers	Using ground plans for Children Centres and parks and lottery play fund bids from South Gloucestershire as the basis for discussion and design.
3.50- 4.25	Master Plan Market Place and Coffee	An exchange of ideas on the master plans
4.25-4.30	Thanks and Close	

Front Page: Plan for St Geroge's Field Playscape Adam White GW UK



**Playscapes Design Day
BOOKING FORM
June 13th 9-4**

ARMSTRONG HALL, CHAPEL STREET, THORNBURY, BRISTOL BS35 2BJ

Name of delegate:
Role:

Full Return Postal Address:

Daytime Telephone No:

E mail:

- I would like to attend the morning session only
 I would like to attend the whole day

- I will be staying for lunch

Please state below any special requirements, eg accessibility of venue, dietary needs (if applicable):

Do you work in South Gloucestershire?

- Yes
 No

If no the cost for the day is £50

- £50 cheque to South Gloucestershire Council enclosed
 I would like to request an invoice made out to:

Please return forms by May 20th to:

Sue Green, South Gloucestershire Council, Learning and School Effectiveness, Bowling Hill, Chipping Sodbury, South Gloucestershire BS37 6JX. Fax: 01454 868967

Email sue.green@southglos.gov.uk

web pdf form <http://www.learningwithsouthglos.org/play>